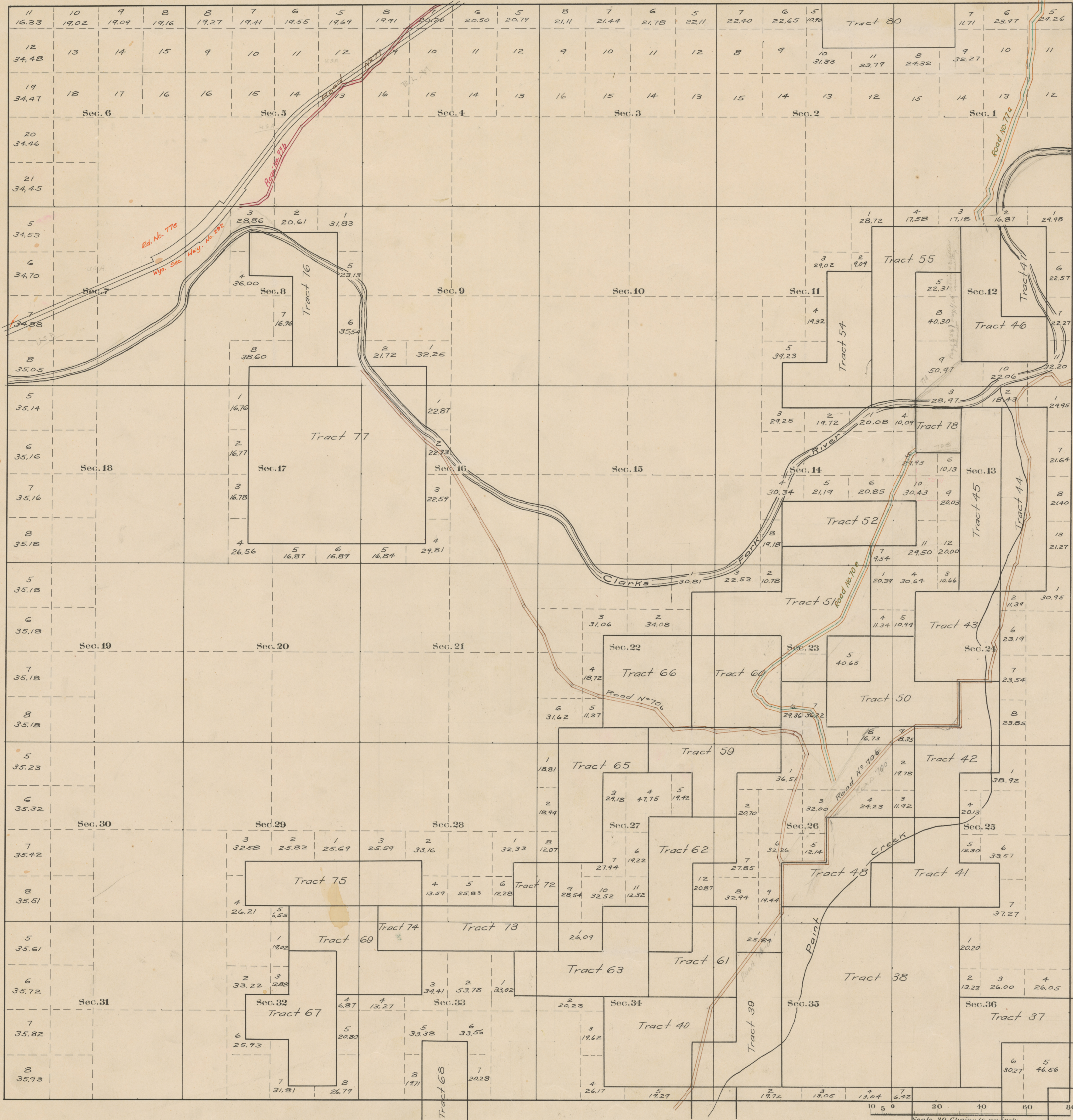


County Roads in Township N<sup>o</sup> 56 North Range N<sup>o</sup> 103 West of the 6<sup>th</sup> Principal Meridian, Big Horn County, Wyoming



RECORD OF ROADS										VACATION		
ROAD NO.	JOURNAL NO.	PAGE	WHEN PETITIONED	WHEN ALLOWED	ORIGINAL PETITION ON FILE	PLAT ON FILE	MEMORANDUM	JOURNAL NO.	PAGE	DATE		
70												
70a	2	503	9/1/1925	12/1/1925	✓	60	Printed Book 7659 & No. 13					
70b	2	520	12/1/1925	5/2/1928	✓	60	See Book 7659 & No. 13					
71	1	281	3/1/1924	3/1/1924								
71a	2	525	3/1/1924	3/1/1924								
71b			11/2/27									
77e	7	443	2504/1917	12-12-44			20' Min. Proj. 5-1007/912				5 359	11/7/51

Scale 20 Chains to an inch  
 The above map of County roads in Township N<sup>o</sup> 56 North of Range N<sup>o</sup> 103 West of the 6<sup>th</sup> Principal Meridian, is strictly conformable to the field notes of the surveys on file in this office which have been examined and approved.  
 County Surveyors Office  
 Basin, Wyoming. 191 } Howard F. Bell, County Surveyor.