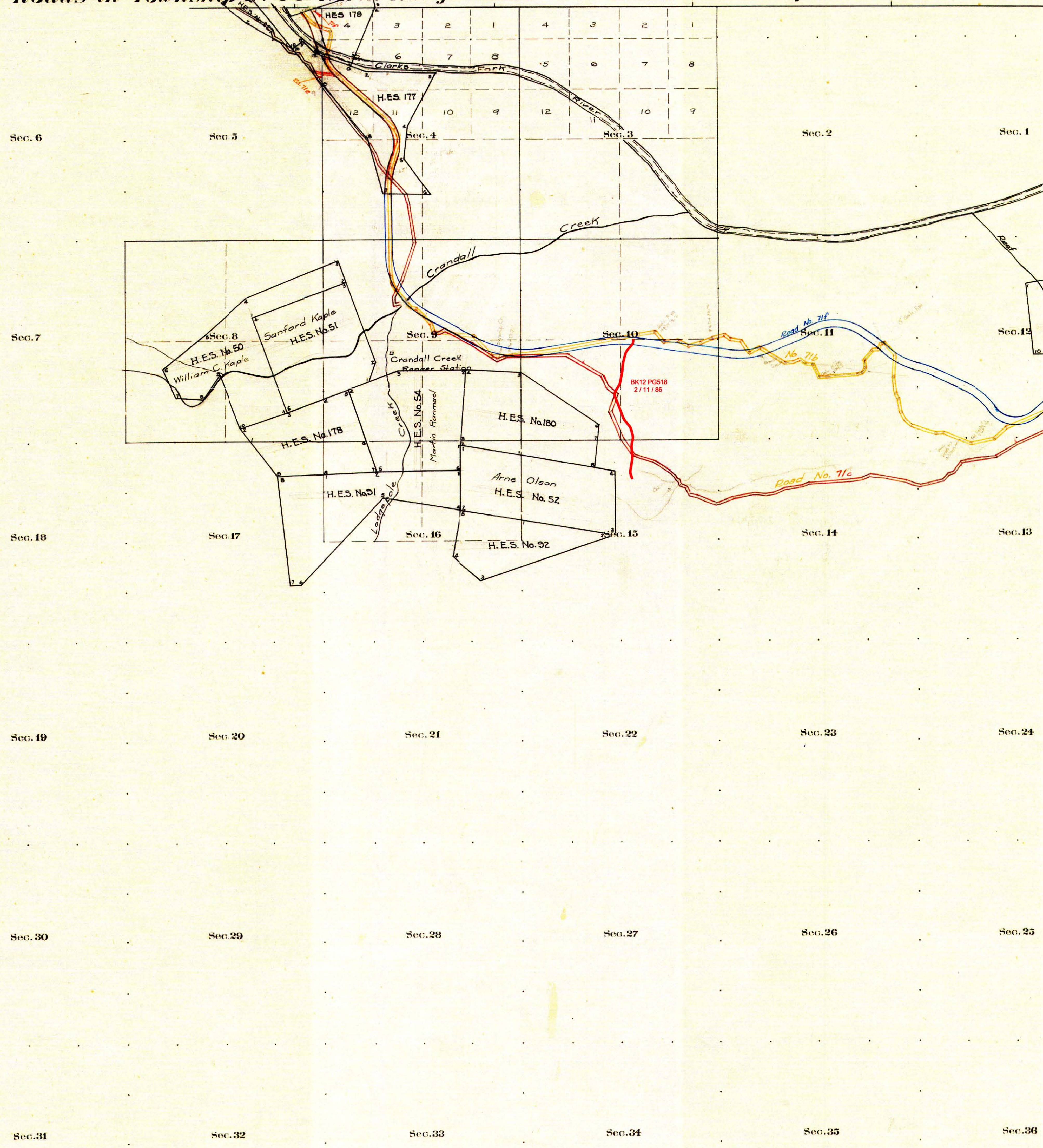


County Roads in Township N^o 56 North Range N^o 106 West of the 6th Principal Meridian, Park County, Wyoming

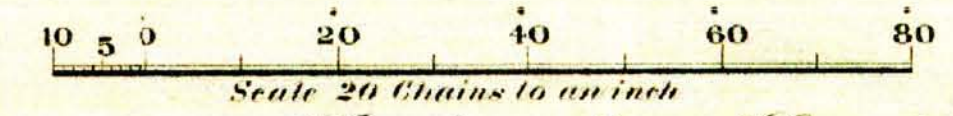


RECORD OF ROADS							VACATION		
ROAD NO.	JOURNAL No.	PAGE	WHEN PETITIONED	WHEN ALLOWED	Original Author or File	Remarks	JOURNAL No.	PAGE	DATE
71	IT	53	5/10/83	12/27/86	60	Crandall Cr. Rd. vacated			
71a	IT	57	5/11/80		60	Never completed			
71b	IT	57		7-6-71	60	Never completed			
71c	IT	58		5-4-71	60	Never completed			
71d	IT	58	1/7/86	2/11/86	60	Never completed			

CERTIFICATE OF SURVEYOR

I, PAUL R. CAMPBELL OF CODY, WYOMING, BEING A REGISTERED LAND SURVEYOR IN THE STATE OF WYOMING, HEREBY CERTIFY THAT THIS MAP WAS UPDATED BY ME AND UNDER MY SUPERVISION BASED ON RESEARCH OF PARK COUNTY COMMISSIONER'S MINUTES DATED FROM 1960 TO 2007. FIELD SURVEYS WERE NOT PERFORMED BY ME AND THE PLATS ARE ACCURATE TO THE BEST OF MY KNOWLEDGE.

Paul R. Campbell
 PAUL R. CAMPBELL
 WYOMING REGISTRATION NO. 2571 LS
 DATE 8/22/10
 WYOMING



The above Map of County roads in Township N^o 56 North of Range N^o 106 West of the 6th Principal Meridian, is strictly conformable to the field notes of the surveys on file in this office which have been examined and approved.
 County Surveyors Office
 Cody, Wyoming.

County Surveyor.