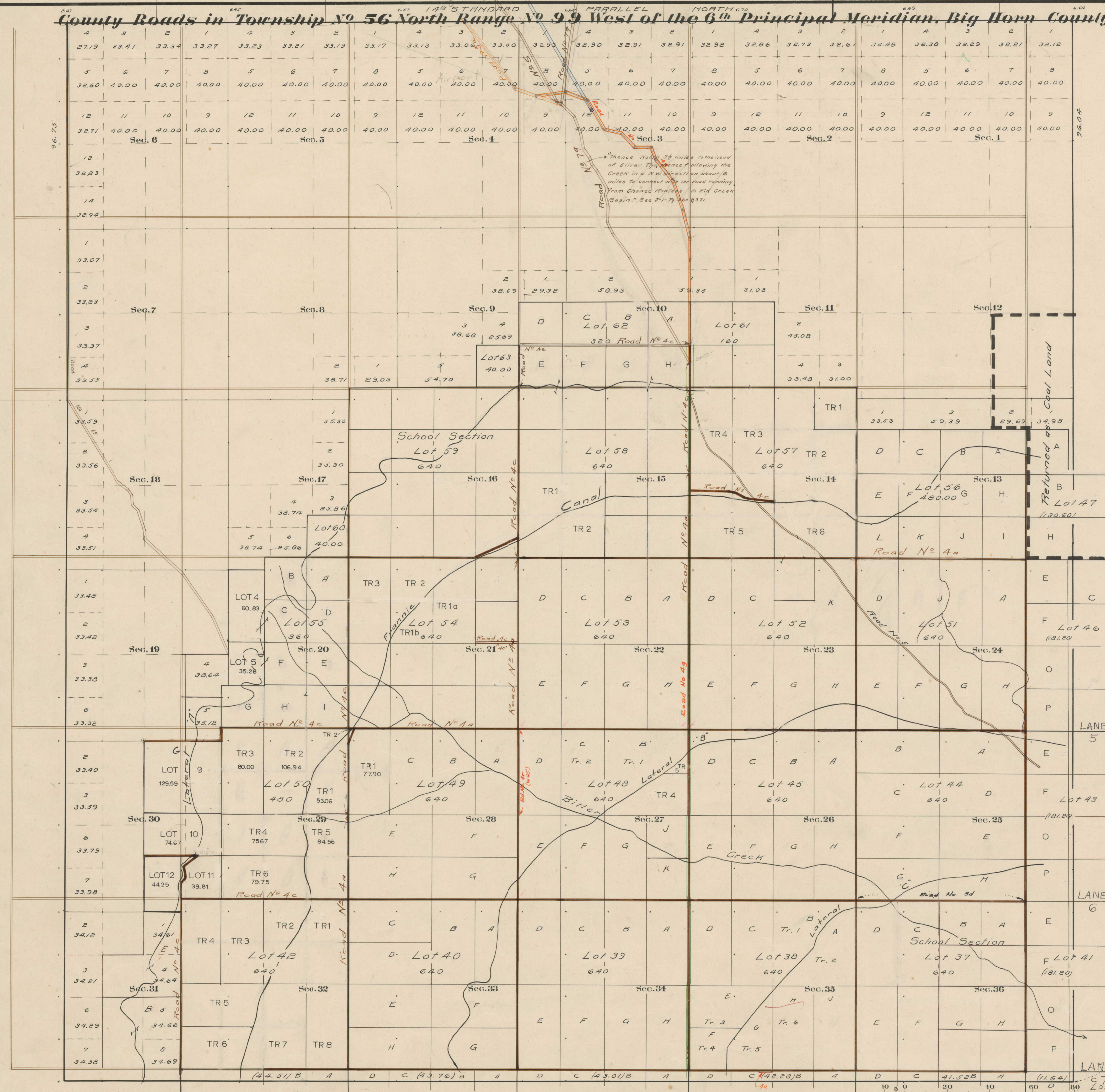


County Roads in Township No 56 North Range No 99 West of the 6th Principal Meridian, Big Horn County, Wyoming

RECORD OF ROADS												VACATION							
ROAD NO.	SECTION	DATE	BY WHOM	REASON	APPROVED	FILE NO.	FILED	REMARKS	DATE	BY WHOM	FILE NO.	FILED	REMARKS	DATE	BY WHOM	FILE NO.	FILED	REMARKS	
3	1	5/18	Oct 6-09	Nov 1-09	-	-	-	On All Sec Lines											
5	1	3/80	7-22	Dec 3-02	Yes	-	-	Indefinite											
PARK COUNTY																			
65	1	188	Apr 2-12	Dec 31-12	Yes	-	-	Surveyed by G.O. Harlow, 2nd Sec											
5								Sec. Notes of Survey 1916											
4a	1	196	2/23/16	8/2/16															
4c	1	224	6/1/16	12/8/16				Go to Lot 57											
4c	2	16	5/1/16	5/1/16	Yes			No Definite Width - 20' Strip Donated											
7a	1	187	4/5/16	3/4/16	Yes			Block Enclosed											
3d	2	101		11/7/17				Go to Lot 57											
5a	2	337	5/21/16	8/21/16				Change in Plan											
4a	4	441	10/6/16	12/7/16				200' Powell-Elk Basin											
4a	4	460	4/1/16	8/1/16				Powell-Elk Basin											
5b	1	172	5/17/16	8/20/16				Powell-Elk Basin											
4r	9	180	10/6/16	10/6/16				Widening Road 4 in W ² NW ⁴ Lot 68											
4u	9	362	4/4/18	4/4/18				Widening Road 4 in Lot 80											



Surveyed: Resurvey E, W, and S. Tr Lines, April, 1905.
 " Subdivisions, June, 1905.
 " Connections, April-June, 1905.
 " Private Land Claims, May-June, 1905.
 1st Stand. Part. Sep. 1883.

The above Map of County roads in Township No. 56 North of Range No. 99 West of the 6th Principal Meridian, is strictly conformable to the field notes of the surveys on file in this office which have been examined and approved.
 County Surveyors Office
 Basin, Wyoming, Sept. 20, 1911.
 Clyde W. Atchley,
 County Surveyor.