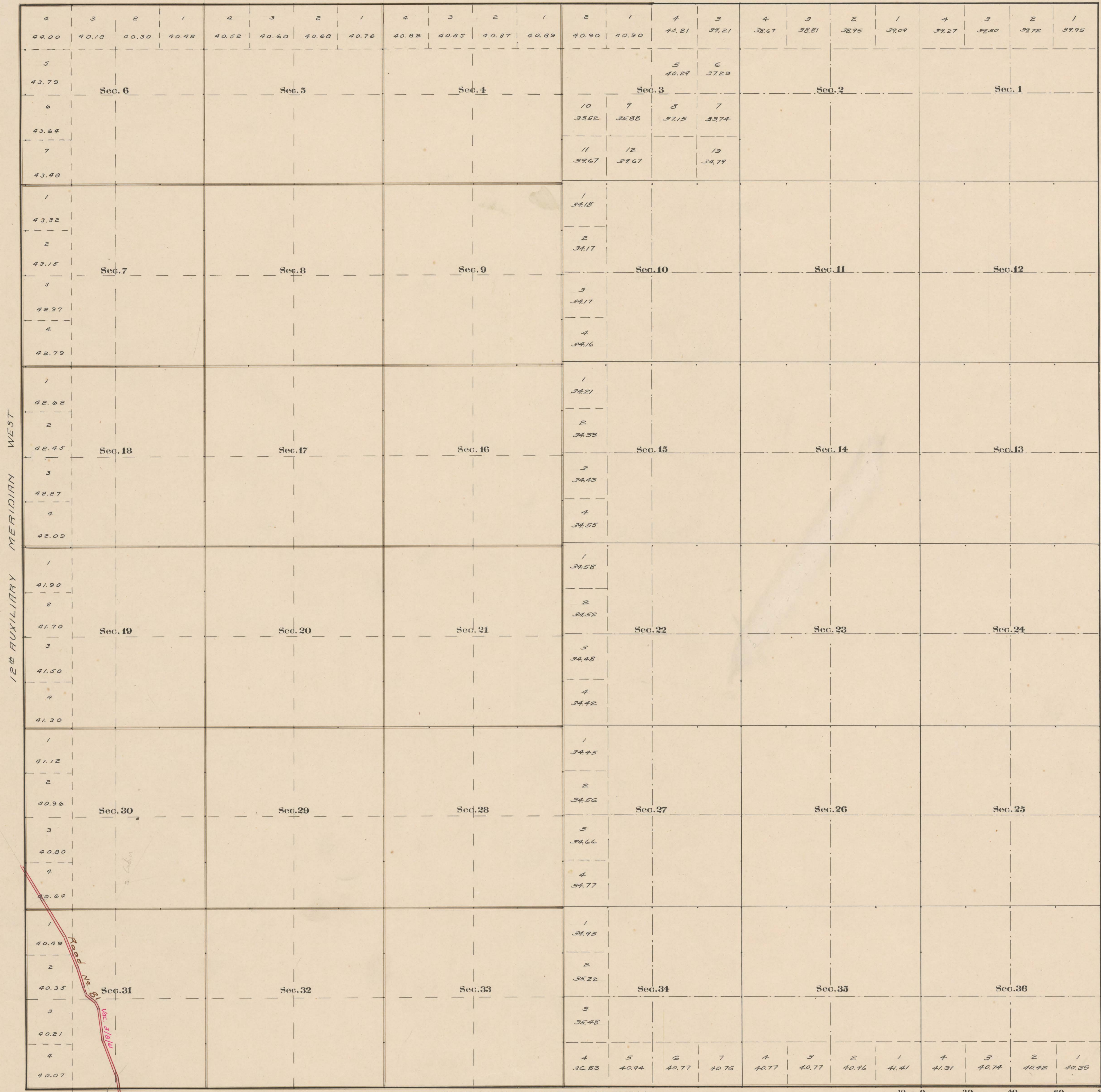


County Roads in Township N^o 57 North Range N^o 100 West of the 6th Principal Meridian, Big Horn County, Wyoming



RECORD OF ROADS VOUCHER										
ROAD NO.	FILE NO.	FILE	WHEN	WHEN	ALLOWED	ORIGINAL PETITION ON FILE	FILE	REMARKS	FOURTH YR	DATE
3	1	576	Oct. 6, 08	Nov. 1, 09	-	-	-	On All Sec. Lines Old Survey.		
								Width		
81	2	16	3/11/16	7/6/16				60 th and 61 st Sec. 24, PARK COUNTY	6	498 3/8/61

Surveyed, Subdivision, Aug. 8-10, 1892.

The above Map of County roads in Township N^o 57 North of Range N^o 100 West of the 6th Principal Meridian, is strictly conformable to the field notes of the surveys on file in this office which have been examined and approved.
 County Surveyors Office
 Basin, Wyoming, Sept. 27, 1911.
 Clyde W. Oberly
 County Surveyor