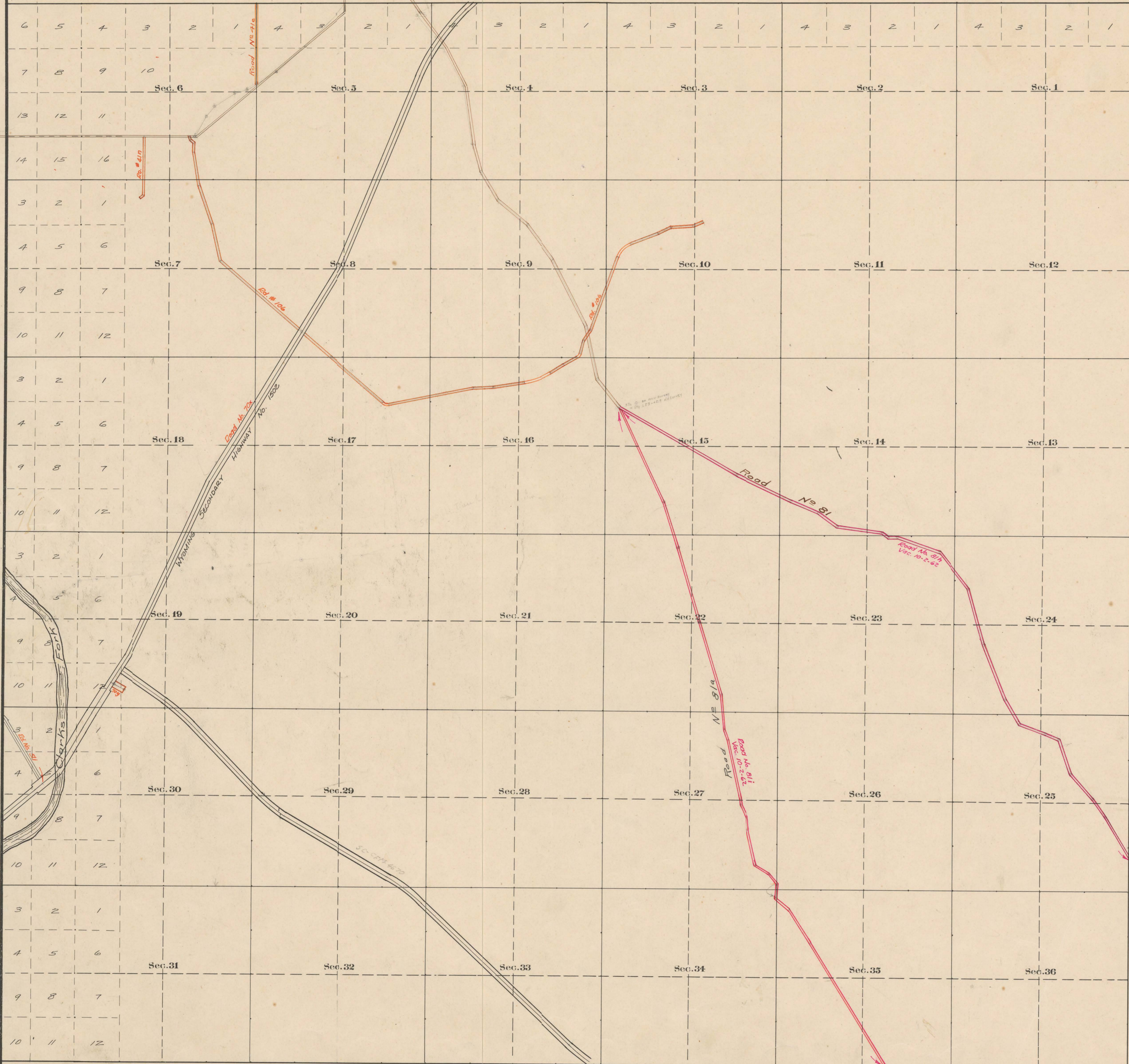


County Roads in Township No 57 North Range No 101 West of the 6th Principal Meridian, Big Horn County, Wyoming



ROAD NO.	JOURNAL NO.	ACRES	WHEN PETITIONED	WHEN ALLOWED	APPROVAL	SECTION ON FILE	REMARKS	SECTION NO.	ACRES	NOTE
41	2	29.5	May 9, 09	July 6, 09	Yes	Yes				
81	2	14	8/4/1916	7/6/1916	Yes	60'	Coody Red Ledge			
81A	2	232	4/7/1920	2/1/1920	Yes	60'	General Custer Act			
41a	3	24.3	5/2/1932	8/3/1932	Yes	60'	Established by Consent			
81b	7	15		10-2-02			Vac. all in Sec. 25, 26, 27, 28, 15			
81c	7	15					Vac. all in Sec. 25, 26, 27, 28, 15			
106	9	103	2/9/76	2/1/76	Yes	60'				
106	9	105	12/1/75	1/6/76						
106	9	286	12/1/59	12/1/59						
111	6	372	8/4/59	12/1/59						
104	9	302	3/7/78	5/7/78						

Scale 20 Chains to an inch

The above Map of County roads in Township No. 57 North of Range No. 101 West of the 6th Principal Meridian, is strictly conformable to the field notes of the surveys on file in this office which have been examined and approved.
 County Surveyors Office
 Basin, Wyoming, Sept. 27, 1911

Clayton W. Petherick
 County Surveyor