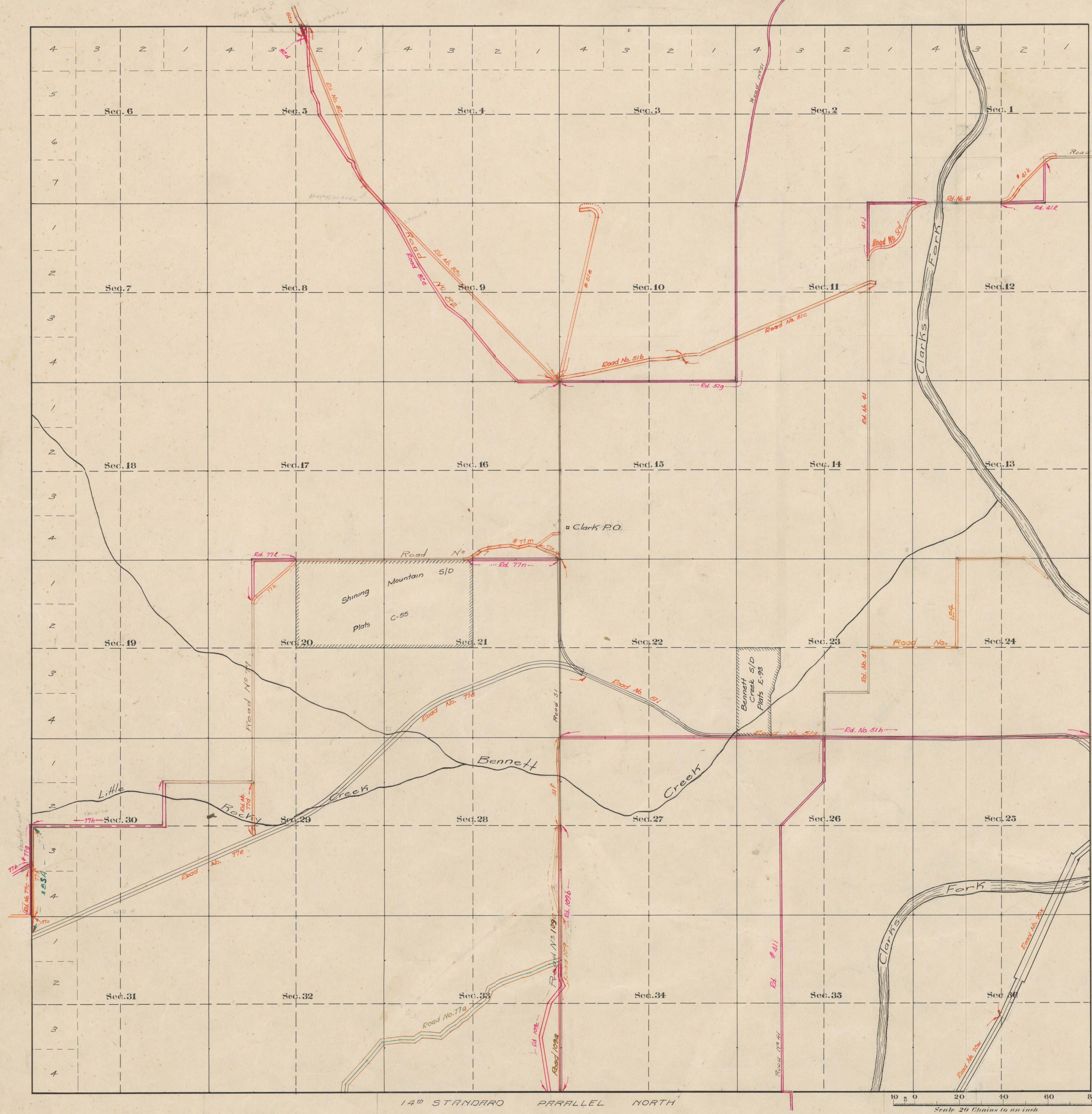


County Roads in Township No 57 North Range No 102 West of the 6th Principal Meridian, Big Horn County, Wyoming



RECORD OF ROADS										VACATION	
ROAD No	JOURNAL No	DATE	WHEN	WHEN	APPROVED	ORIGINAL METE	FILE	FILE	FILE	DATE	DATE
41	2	295	May 9 - 09	July 6 - 09	Yes	Yes					
51	2	182	June 9 - 08	Sept 1 - 08	Yes	Yes					
109	2	580	May 9 - 26	July 16 - 26	Yes	Yes					
51a	2	581	4/30/27	12/1/27	Yes	Yes					
77	1	281	5/4/1914	5/4/1914	✓	✓					
109	2	427	5/6/1924	5/7/1924	✓	✓					
129	3	516	11/7/1935	11/1/1936	✓	✓					
77c	2	523	5/5/1926	3/5/1926	Yes	Yes					
51c	8	226	Resolution	7-6-71							
51b	8	225	4-8-70	10-6-71	Yes	Yes					
77b			10-27-61		Yes	Yes				5	352
77c	5	326	10-27-51	11-7-51	Yes	Yes					
77d	6	142	6-15-70	8-6-70	Yes	Yes					
77e	7	443	5-15-70	12-13-66	Yes	Yes					
82	8	108	Proposition	10-7-70	60'	Sec. 4, 5, 8, 16					
82a	8	172	Proposition	1-7-71	60'	NE 4, Sec. 5					
82c	8	600	Resolution	12-2-70	60'	Sec. 5, 9					
51d	9	47	Resolution	6-4-75	60'						
41j										9	90
51k	9	79	11/4/75	11/4/75	60'					9	90
51l										9	173
51e	9	112	11/6/76	2/4/76	60'						
77f	9	77	10/7/78	11/4/75	60'					9	91
77g										9	172
77h	9	94	11/5/75	12/3/75	60'					9	179
77i										9	192
77j	9	93	11/5/75	12/3/75	60'					9	191
77k										9	175
77l	9	92	11/4/75	3/4/77	60'					9	176
51f	8	640	1/7/75	3/4/75	60'					9	177
109k										9	178
109e										9	179
82d										9	180
82e										9	181
51g										9	182
51h										9	183
77p	9	234	Casement	5/4/77	60'					9	184
70k	6	276	10/8/58	12/3/58							
70w	6	246	7/2/53	3/6/58	Yes	Yes					
51i	6	372	8/4/58	12/1/57	Yes	Yes					

The above Map of County roads in Township No. 57 North of Range No. 102 West of the 6th Principal Meridian, is strictly conformable to the field notes of the surveys on file in this office which have been examined and approved.
 County Surveyors Office
 Basin, Wyoming, Sept. 27, 1911.
 Clyde W. Athlete
 County Surveyor.