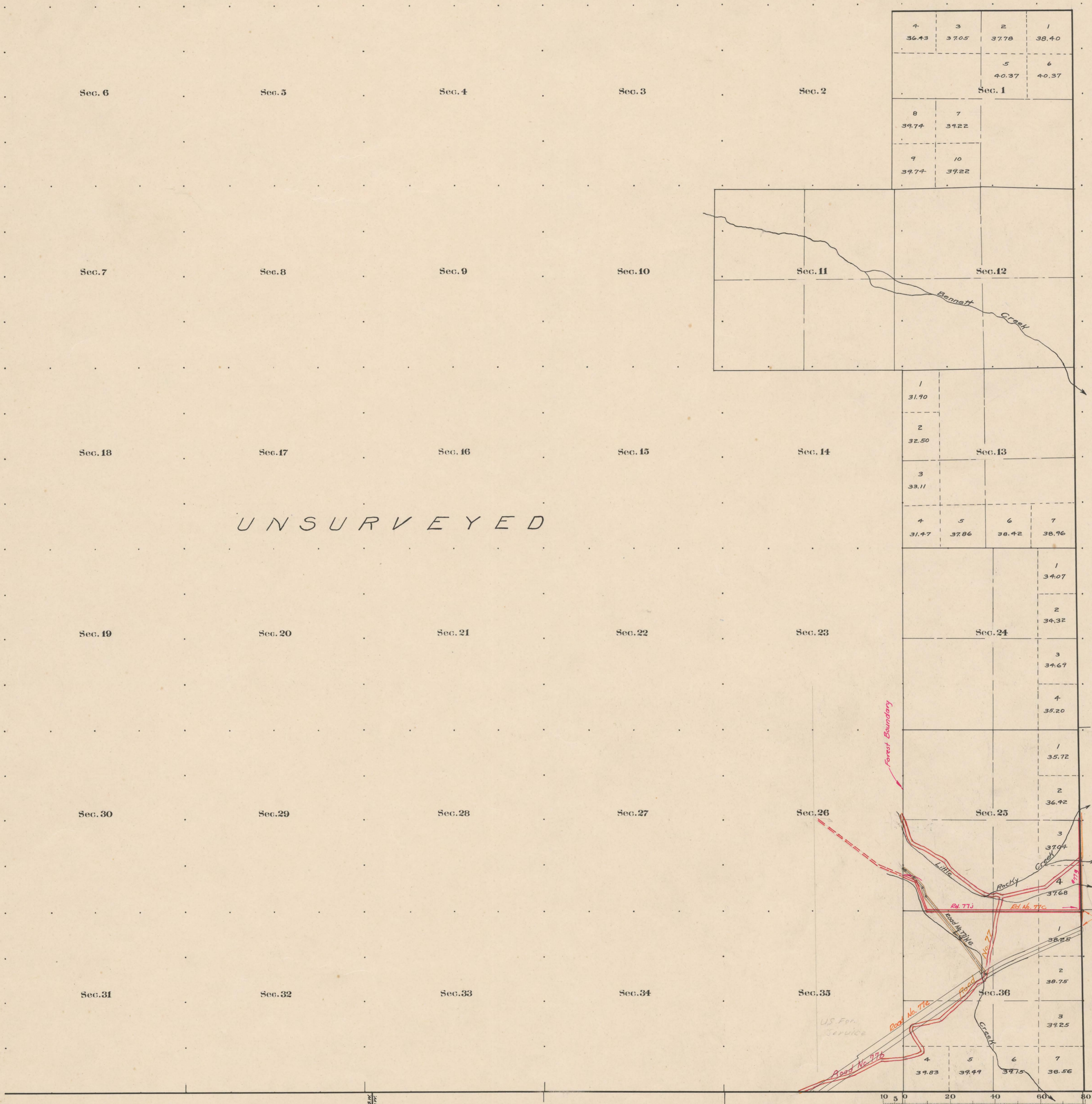


County Roads in Township N<sup>o</sup> 57 North Range N<sup>o</sup> 103 West of the 6<sup>th</sup> Principal Meridian, Big Park County, Wyoming



UNSURVEYED

4	3	2	1
36.43	37.05	37.78	38.40
		5	6
		40.37	40.37
Sec. 1			
8	7		
39.74	39.22		
9	10		
39.74	39.22		

1			
31.90			
2			
32.50			
3			
33.11			
4	5	6	7
31.47	37.86	38.42	38.96

1			
34.07			
2			
34.32			
3			
34.67			
4			
35.20			

1			
35.72			
2			
36.92			
3			
37.04			
4			
37.68			

1			
38.25			
2			
38.75			
3			
39.25			
4	5	6	7
39.83	39.49	39.75	38.56

Record of Roads										Vacation	
Road No.	Book	Page	Retained	Allocated	Width	Remarks	Book	Page	Date		
776	I	231	4/4/14	5/4/14							
776			11/7/51							5	354
776			10-27-51	11-7-51	Yes	Replaced by 776					
776	7	443	10-18-51	11-2-51		Replaced by 776					
777	9	78	10/1/75	11/4/75		Replaced by 776					
777						60'				9	71
778	9	92	11/4/75	1/4/77							11-4-76

Scale 20 Chains to an inch  
 The above Map of County roads in Township N<sup>o</sup> 57 North of Range N<sup>o</sup> 103 West of the 6<sup>th</sup> Principal Meridian, is strictly conformable to the field notes of the surveys on file in this office which have been examined and approved.  
 County Surveyors Office  
 Cody, Wyoming, MARCH, 16 1923  
 Howard P. Bell, County Surveyor