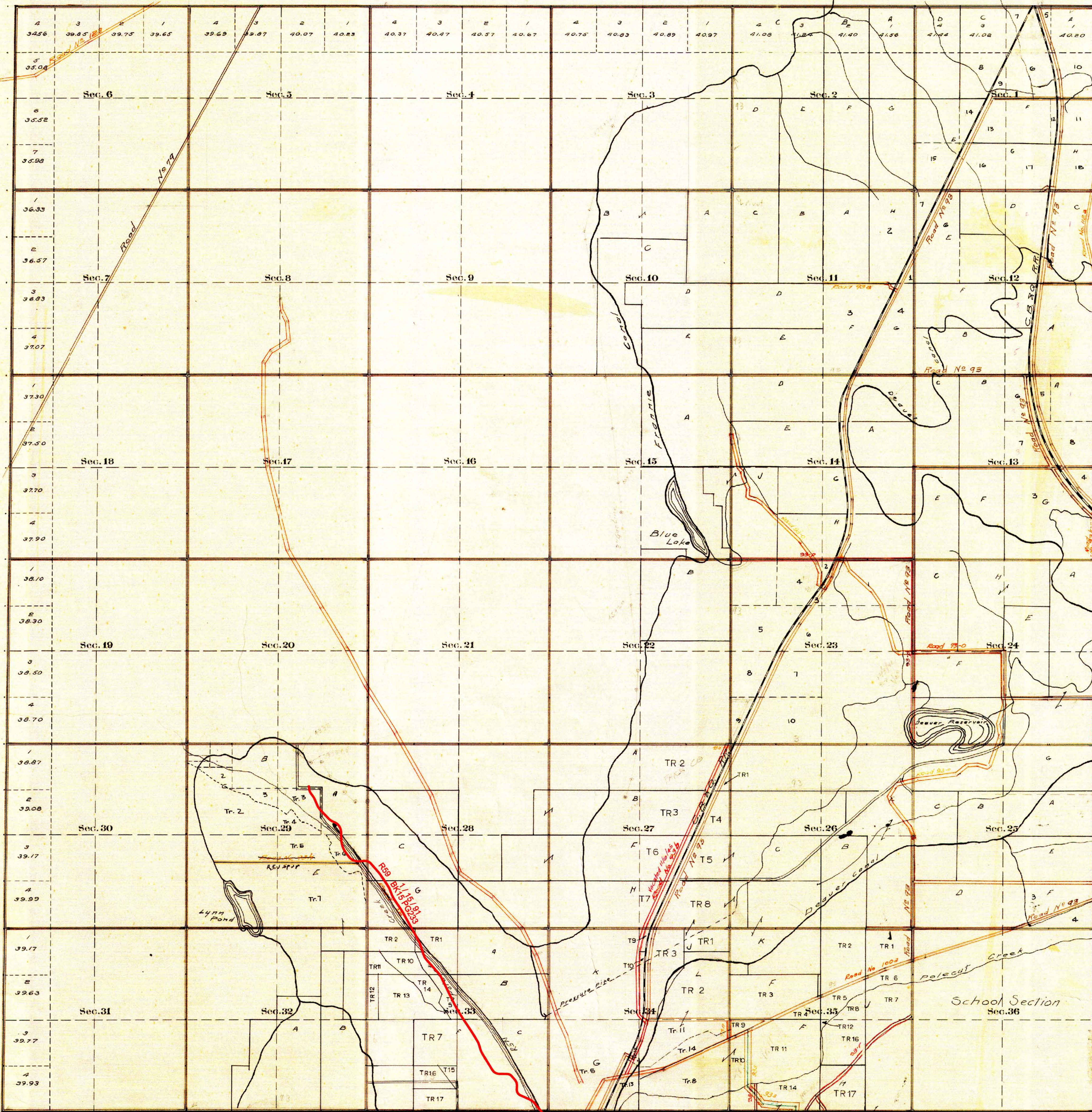


County Roads in Township N^o 57 North Range N^o 98 West of the 6th Principal Meridian, ~~Big Horn~~ **PARK** County, Wyoming

PARK



RECORD OF ROADS										VARIATION		
ROAD NO.	SECTION	PAGE	WHEN	APPROVED	WHEN	REVISIONS MADE	BY	FILE	REMARKS	SECTION	PAGE	DATE
3	1	376	Oct. 6, 08	Nov. 1, 08	-	-	-	-	41 Sec. Lines			
PARK COUNTY												
93	2	138	3/1/18	8/1/18	Yes	60	Franklin Division					
93	2	278	3/1/18	8/1/18	Yes	60	Franklin Division					
93	2	218	5/3/18	4/1/18	✓	60	Franklin Division					
93	2	337	5/1/18	4/1/18	✓	60	Franklin Division					
93	2	287	5/2/18	3/1/18	✓	60	Franklin Division					
93	3	109	1/8/18	4/1/18	✓	60	Franklin Division					
93	3	46	1/2/18	4/1/18	✓	100	State Highway					
93	2	55	5/1/18	4/1/18	✓	60	Franklin Division					
93	2	286	3/1/18	4/1/18	✓	60	Franklin Division					
93	2	278	3/1/18	4/1/18	✓	60	Franklin Division					
93	2	367	1/2/18	4/1/18	✓	60	Franklin Division					
93	2	278	4/1/18	5/1/18	✓	60	Franklin Division					
93	2	493	5/1/18	7/1/18	✓	60	Franklin Division					
93	2	579	5/1/18	7/1/18	✓	60	Franklin Division					
93	2	443	1/2/18	3/1/18	✓	60	Franklin Division					
93	2	305	1/2/18	3/1/18	✓	60	Franklin Division					
93	2	309	3/1/18	4/1/18	✓	60	Franklin Division					
93	2	315	4/1/18	5/1/18	✓	60	Franklin Division					
93	2	480	3/26/18	3/4/18	Yes	60	Surveyed 3/4/18					
93	2	305	4/1/18	5/1/18	✓	60	Sec. 18, 25, 28, 29, 30					
93	2	182	1/2/18	1/2/18	✓	60	Sec. 2, 27, 28					
R59 15 233										11/15/91		

CERTIFICATE OF SURVEYOR

I, PAUL R. CAMPBELL OF CODY, WYOMING, BEING A REGISTERED LAND SURVEYOR IN THE STATE OF WYOMING, HEREBY CERTIFY THAT THE ABOVE MAP IS A TRUE AND CORRECT COPY OF THE ORIGINAL SURVEY MAP AS FILED IN THE OFFICE OF THE COUNTY COMMISSIONER'S MINUTES DATED FROM 1860 TO 1892, AND THAT THE SAME WERE NOT PERFORMED BY ME AND THE PLATS ARE ACCURATE TO THE BEST OF MY KNOWLEDGE.

Paul R. Campbell
Surveyor
WYOMING REGISTERED LAND SURVEYOR NO. 2873

Surveyed March 1892

Scale 20 Chains to an inch

The above map of County roads in Township No. 57 North of Range No. 98 West of the 6th Principal Meridian, is strictly conformable to the field notes of the survey on file in this office which have been examined and approved.

County Surveyors Office
Basin, Wyoming, Sept. 8 1911

Clyde W. Atchley,
County Surveyor.

Magnetic Decl. 1828E.