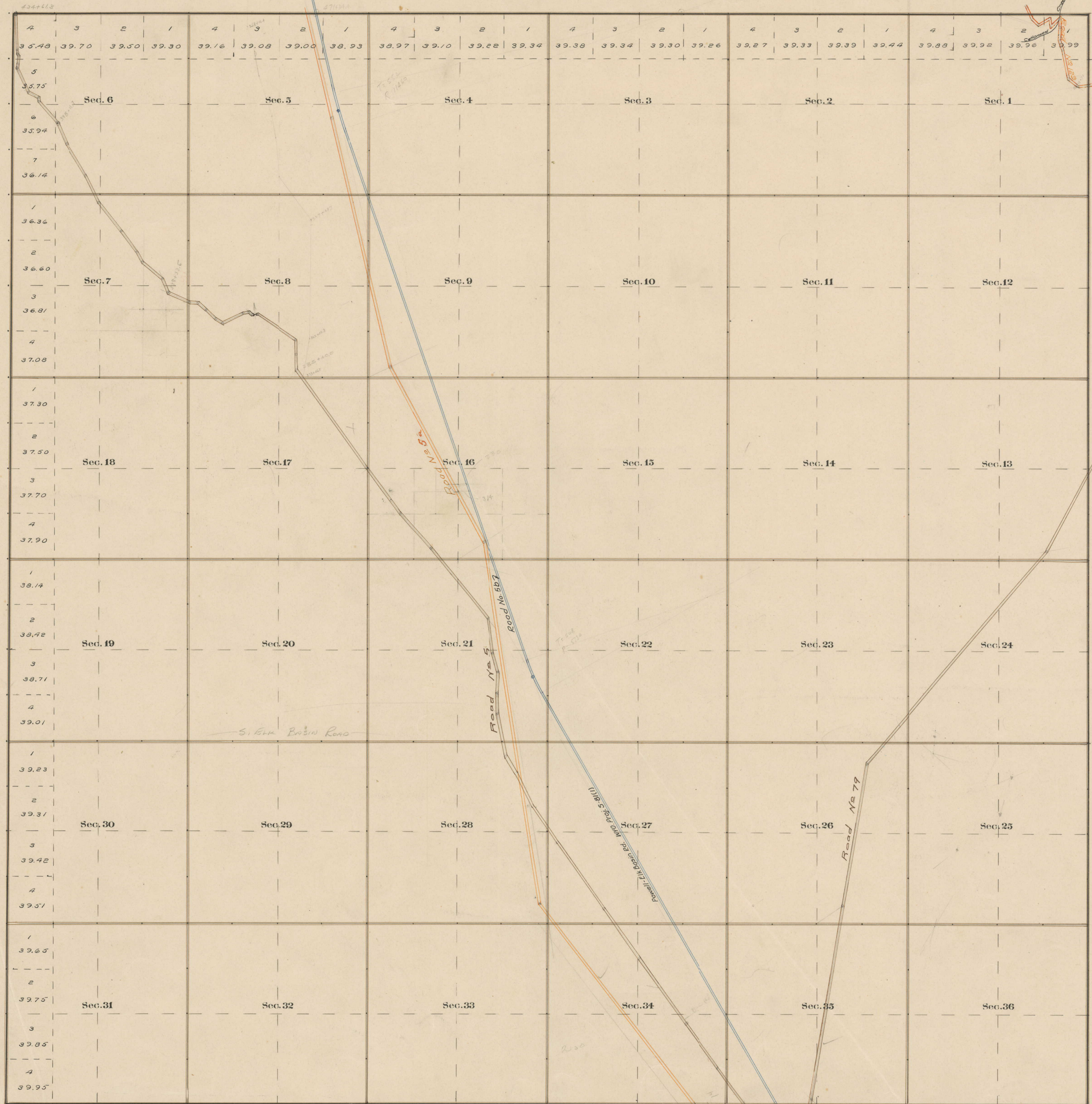


County Roads in Township No 57 North Range No 99 West of the 6th Principal Meridian, ~~Big Horn~~ County, Wyoming

PARK



RECORD OF ROADS										VACATION		
ROAD NO.	JOURNAL NO.	PAGE	WHEN PETITIONED	WHEN ALLOWED	ORIGINAL PETITION ON FILE	FILED	REMARKS	QUANTITY	DATE	DATE	DATE	
3	1	576	Oct 6-08	Nov 1-09	-	-	On B Sec. Lines					
5	1	360	1/4/1902	1/2/1902	Yes	-	Surveyed 1915					
5a	2	337	3/20/1902	3/21/1902	✓	60	Changed from 1915					
79	2	287	7/4/18	7/8/18	✓	60	Filed on Bench					
123	3	443	1/3/22	2/2/22	-	60	Filed on Bench					
56	1	172	4/17/51	5/20/51	✓	60	Filed on Bench					

Map Dec. 15 1911

Surveyed - Subdivisions, June, 1892.

Scale 20 Chains to an inch

The above Map of County roads in Township No. 57 North of Range No. 99 West of the 6th Principal Meridian, is strictly conformable to the field notes of the surveys on file in this office which have been examined and approved.
County Surveyors Office
Basin, Wyoming, Sept. 20, 1911

Edw. W. Atchley,
County Surveyor.