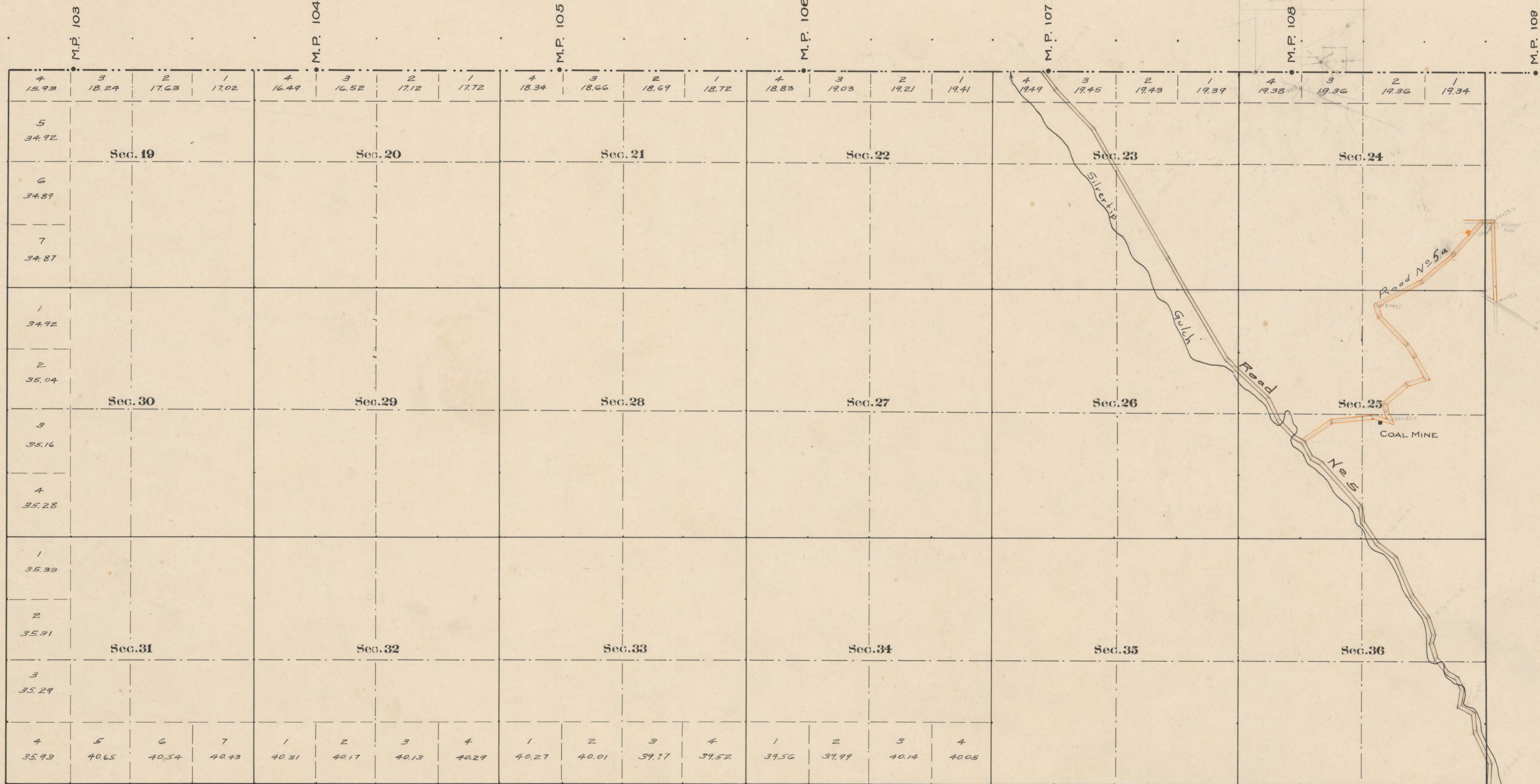


County Roads in Township No 58 North Range No 100 West of the 6th Principal Meridian, Big Horn County, Wyoming



MONTANA

RECORD OF ROADS							REMARKS
Road No.	Journal No.	Page No.	WHEN ESTABLISHED	WHEN ALLOWED	Original Petition on file	Filed on file	
5	1	360	1/1/1902	1/5/1902	Yes	60'	Surveyed 1915 Chempain Road No 5
5a	2	387	3/22/1902	8/2/22	✓		

Scale 20 Chains to an inch
The above Map of County roads in Township No. 58 North of Range No. 100 West of the 6th Principal Meridian, is strictly conformable to the field notes of the surveys on file in this office which have been examined and approved.
County Surveyors Office
CODY Wyoming, October 30, 1918

Howard F. Bell
County Surveyor