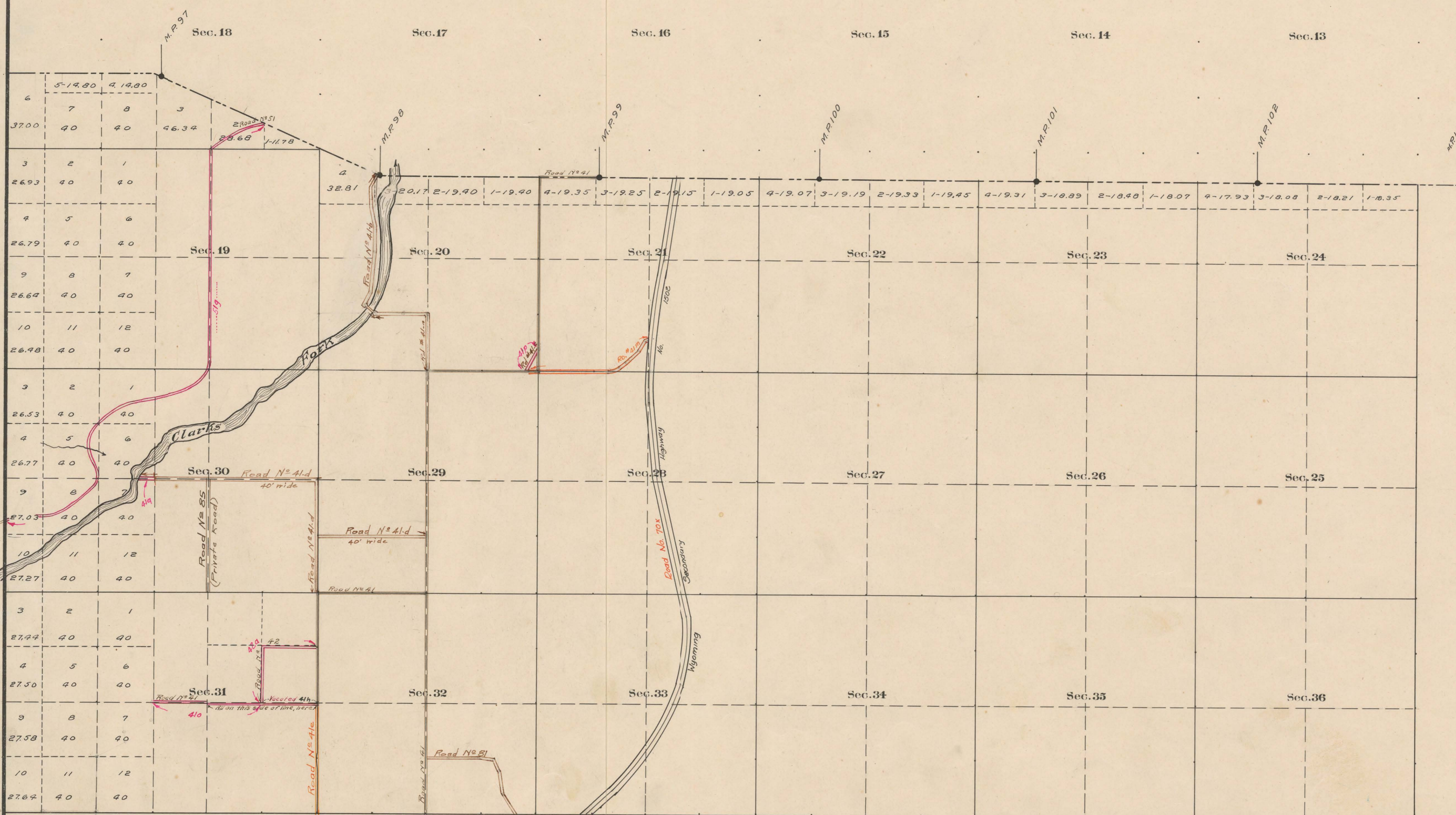


County Roads in Township No 58 North Range No 101 West of the 6th Principal Meridian, Big Horn County, Wyoming

MONTANA

RECORD OF ROADS											VACATION		
ROAD NO	SECTION	DATE	WHEN	WHEN	ORIGINAL PETITION FILED	FILED	FILED	FILED	FILED	FILED	FILED	FILED	FILED
41	2	295	May 4 - 29	July 6 - 29	Yes	Yes	Yes	Yes	Yes	Yes	Yes	Yes	Yes
42	2	396	June 7 - 10	July 5 - 10	-	-	-	-	-	-	-	-	-
51	2	182	June 9 - 08	Sept 1 - 08	Yes	Yes	Yes	Yes	Yes	Yes	Yes	Yes	Yes
41g	2	91	8/25/17	9/2/17	Yes	Yes	Yes	Yes	Yes	Yes	Yes	Yes	Yes
41a	2	72	5/2/17	5/2/17	Yes	Yes	Yes	Yes	Yes	Yes	Yes	Yes	Yes
41b	2	91	8/25/17	9/2/17	Yes	Yes	Yes	Yes	Yes	Yes	Yes	Yes	Yes
41c	2	181	10/6/17	11/1/17	Yes	Yes	Yes	Yes	Yes	Yes	Yes	Yes	Yes
81	2	16	8/1/16	9/6/16	Yes	Yes	Yes	Yes	Yes	Yes	Yes	Yes	Yes
85	2	274	9/4/15	9/1/15	Yes	Yes	Yes	Yes	Yes	Yes	Yes	Yes	Yes
41e	3	243	5/3/192	5/3/192	Yes	Yes	Yes	Yes	Yes	Yes	Yes	Yes	Yes
41f	2	285	6-1-10	7-5-10	-	-	-	-	-	-	-	-	-
41m	9	112	1-6-76	2-4-76	-	-	-	-	-	-	-	-	-
42a													
42b													
42c													
42d													
42e													
42f													
42g													
42h													
42i													
42j													
42k													
42l													
42m													
42n													
42o													
42p													
42q													
42r													
42s													
42t													
42u													
42v													
42w													
42x													
42y													
42z													



Surveyed, Subdivisions and Connections, July 23, 1892.

The above Map of County roads in Township No. 58 North of Range No. 101 West of the 6th Principal Meridian, is strictly conformable to the field notes of the surveys on file in this office which have been examined and approved.
 County Surveyors Office
 Basin, Wyoming. Sept. 27, 1911
 Elford W. Atchuck, County Surveyor.