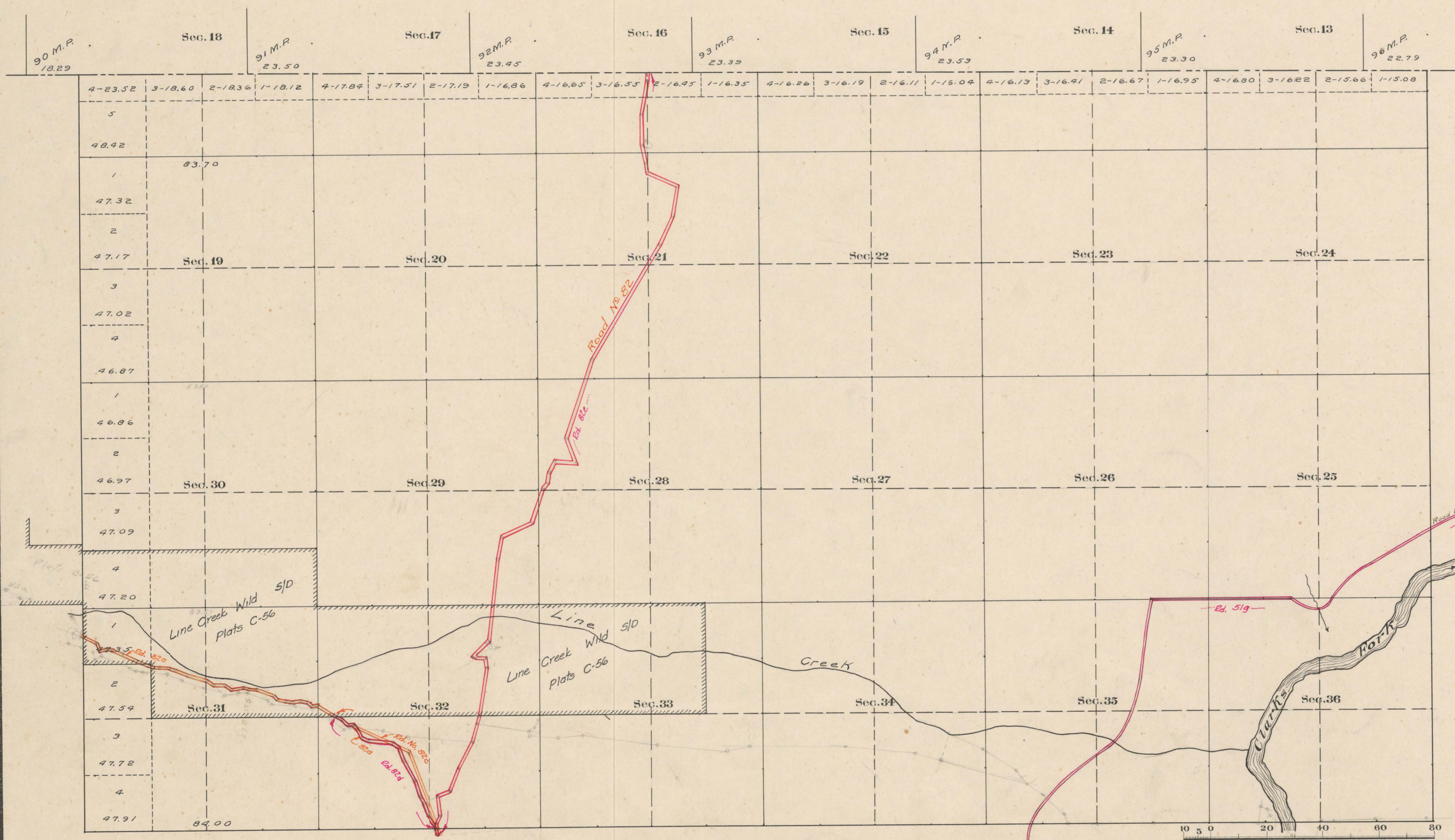


County Roads in Township No 58 North Range No 102 West of the 6th Principal Meridian, Big Horn County, Wyoming

MONTANA



Surveyed, Subdivisions and Connections, July 26-30, 1892.  
 Supplement plat correction of N. & W. tier of Lots approved Jan. 10, 1907.

The above Map of County roads in Township No. 58 North of Range No. 102 West of the 6th Principal Meridian, is strictly conformable to the field notes of the surveys on file in this office which have been examined and approved.  
 County Surveyors Office  
 Basin, Wyoming, Sept. 27, 1911.  
 Elph. W. Althoff  
 County Surveyor.

RECORD OF ROADS										VACATION		
ROAD No	JOURNAL No	PAGE	WHEN PETITIONED	WHEN ALLOWED	ORIGINAL PETITION ON FILE	ALLOT BY FILE	REMARKS	JOURNAL No	PAGE	DATE		
51	2	182	June 3-08	Sept. 1-08	Yes	Yes	"The Change Bill" Survey by H.E. Bell 10-3-15					
52	8	173	U.S. Survey Plat of 11-26-92	Resurveyed 1-7-97			By Prescription					
53	8	600										
54												
55												
56												
57												
58												
59												
60												
61												
62												
63												
64												
65												
66												
67												
68												
69												
70												
71												
72												
73												
74												
75												
76												
77												
78												
79												
80												

Sec. 21, 22  
 Sec. 5-57-M2

Mag. Dec. 18° 31' E.