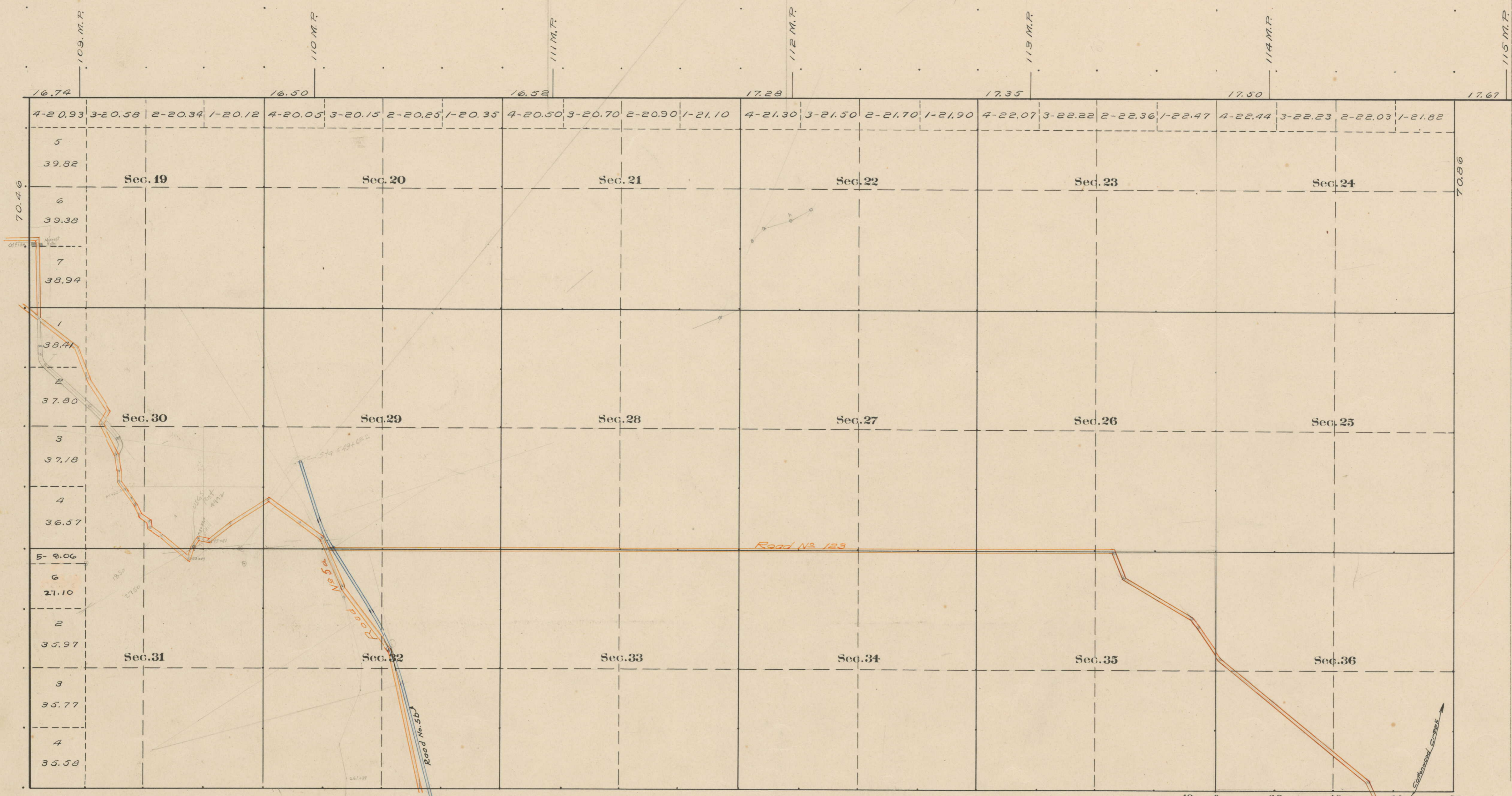


County Roads in Township N<sup>o</sup> 58 North Range N<sup>o</sup> 99 West of the 6<sup>th</sup> Principal Meridian, ~~Big Horn~~ **Park** County, Wyoming

PARK

MONTANA

RECORD OF ROADS										VACATION		
ROAD NO	JOURNAL PG	PAGE	WHEN PETITIONED	WHEN ALLOWED	ORIGINAL PETITION ON FILE	ALLIED ON FILE	REMARKS	JOURNAL PG	PAGE	DATE		
54	2	337	3/12/1922	3/2/1922	Yes	60	CRIDGE TRUSS					
123	3	443	1/1/1924	2/1/1925	-	60	CRIDGE TRUSS					
56	1	172	4/1/1911	8/20/1911	✓	60	CRIDGE TRUSS					



Surveyed + Subdivisions, July 13-16, 1892.  
Connections, " " " "

Scale 20 Chains to an inch.

The above Map of County roads in Township N<sup>o</sup> 58 North of Range N<sup>o</sup> 99 West of the 6<sup>th</sup> Principal Meridian, is strictly conformable to the field notes of the surveys on file in this office which have been examined and approved.

County Surveyors Office  
Basin, Wyoming, Sept. 20, 1911

Walter W. Atchley,  
County Surveyor.